

R.E.D.

PROJECTS

WWW.REDPROJECTSCONSULTING.CO.ZA

OUR EFFICIENT
SOLUTIONS
EQUAL YOUR
PROJECT SUCCESS

A little bit about us...



With over 20 years experience in the consulting industry, Ross Engineering Design Projects has worked across many sectors including petrochemical, industrial, commercial, residential, sugar, pulp & paper and the tyre production industry, to name a few.....



We cover draughting, design, reports, studies and management in all disciplines of Engineering, Architecture, Quantity Surveying and Project Management.



We also have key links to other top consulting firms who we have partnered with before to help with mega projects and niche market projects.



What we
do...
All together

Project Management

Building Information Modelling

Architecture

Surveying

3D Scanning and As Built Modelling

Quantity Surveying

Green Energy and Water Harvesting

Engineering and Draughting

What we do... Engineering and Draughting



Civil (all types)

Geotechnical

Structural

Environmental

What we
do...

Engineering
and
Draughting



POINT CLOUD



HD PHOTO

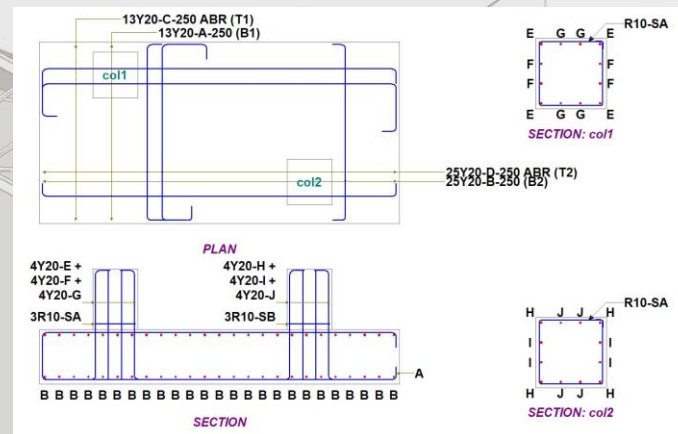
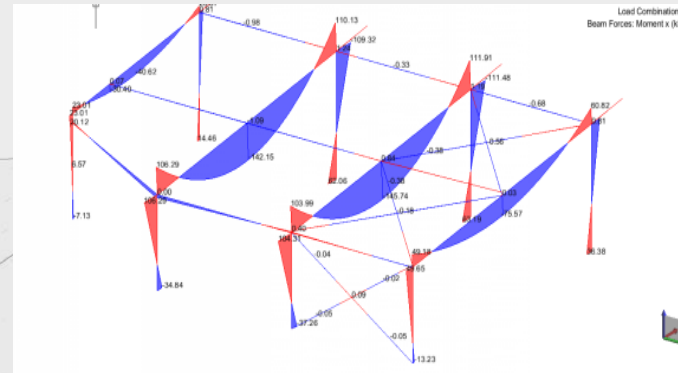
Mechanical (all types)

Electrical (LV, MV, HV)

Comms & Instrument..

Process

What we do... Engineering and Draughting



ITEM NO	QUANTITY	RATE	AMOUNT
BILL NO. 3			
STRUCTURAL STEELWORK			
STEEL COLUMNS AND BEAMS			
GALVANISED STEEL COLUMNS AND BEAMS			
<u>Welded columns in single lengths with flat base, cap, bearer and connection plates, bolted to concrete</u>			
1	254 x 146mm x 31kg/m I-section columns	t	0.71
2	PC 180 x 70 columns	t	0.21
<u>Welded beams in single lengths with flat bearer and connection plates, bolted to steel</u>			
3	254 x 146mm x 31 kg/m I-section beams	t	0.91
4	406 x 140mm x 46kg/m I-section beams	t	1.96
5	PC 230 x 90mm beam	t	0.32
9	406 x 140 x 46 kg/m I-section haunch	t	0.09
STEEL PURLINS, GIRTS, BRACING, ETC			
GALVANISED STEEL PURLINS, GIRTS, BRACING, ETC			
<u>Purlins and airts, bolted to steel</u>			
6	150 x 65 x 20 x 3.0mm Thick cold-formed lipped channel purlins	t	1.65
<u>Welded bracing, anti-sag rails, etc with flat connection plates, bolted to steel</u>			
7	80 x 80 x 8mm L-section Angle bracing	t	0.27
BOLTS, FASTENERS, ETC			
<u>20mm Diameter HiHi HIT-HY 150 with HIT-V/HAS chemical anchor, High Tensile M20 Bolts, High tensile M22 Bolts all Class 8.8</u>			
8	Chemical Anchor	No	32.00
10	<u>Assume a provisional rate of 12% of overall structural steelwork for bolts, cleats, plates etc.</u>	Item	12%
Carried to final summary			

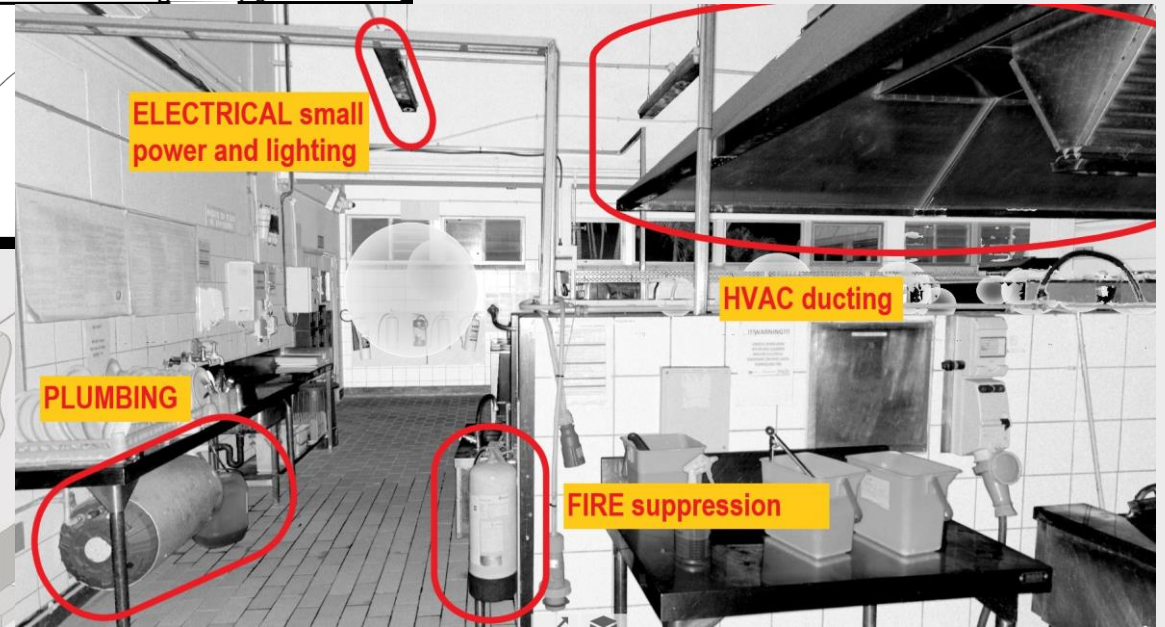
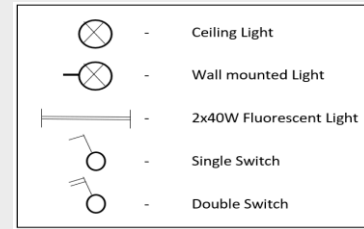
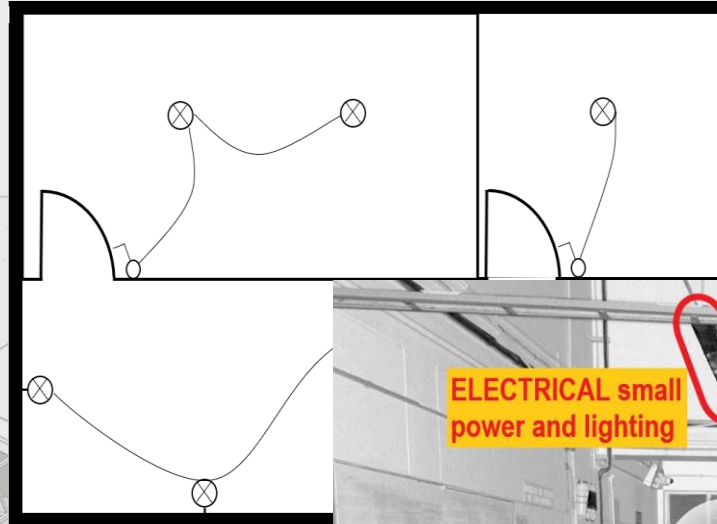
Calculations

Reports

Quantities

Detailing

What we do... Engineering and Draughting



Fire

Electrical (SP+L)

HVAC

Plumbing

What we do... Architecture



Residential

Commercial

Interior Design

Estates

RED.

DYNAMICS

WWW.REDPROJECTSCONSULTING.CO.ZA

Energy Collection / Power Conversion

Hydro Power Generation

Sports Equipment

Desalination Plants

Wind Turbines

Creating new inventions
for all sectors of the
industry and the world

“WE THINK OF A NEW INVENTION AND THEN MAKE IT REAL”

R.E.D.

TECHNOLOGIES

WWW.REDPROJECTSCONSULTING.CO.ZA

R.E.D. Technologies handles the sales components for R.E.D. Dynamics devices and is the authorised reseller of Prokon software.



How to get in touch...



Ross Wallach – 082 877 7270



redprojects001@gmail.com



<http://www.redprojectsconsulting.co.za>



P.O. Box 1002, Hyper by the sea, Durban, 4053

R.E.D.

PROJECTS

WWW.REDPROJECTSCONSULTING.CO.ZA

OUR EFFICIENT
SOLUTIONS
EQUAL YOUR
PROJECT SUCCESS